

ベトナム ホーチミン市2区

物件周辺情報



A BUYER'S GUIDE – LOCATION

Metro Line No. 1, Saigon Bridge moving at pace



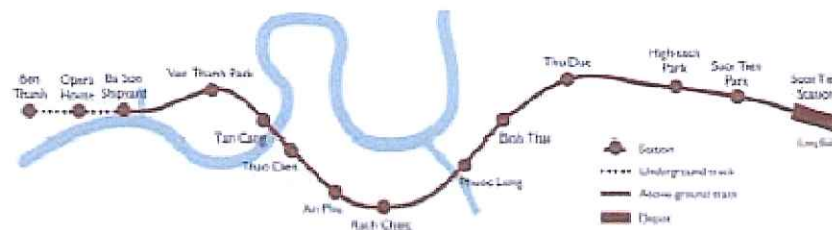
Saigon 2 Bridge ready in end-November

Wednesday, April 17, 2013, 21:35 (GMT+7)



Metro Line 2 'large-scale' next year

Saturday, July 6, 2013, 19:43 (GMT+7)



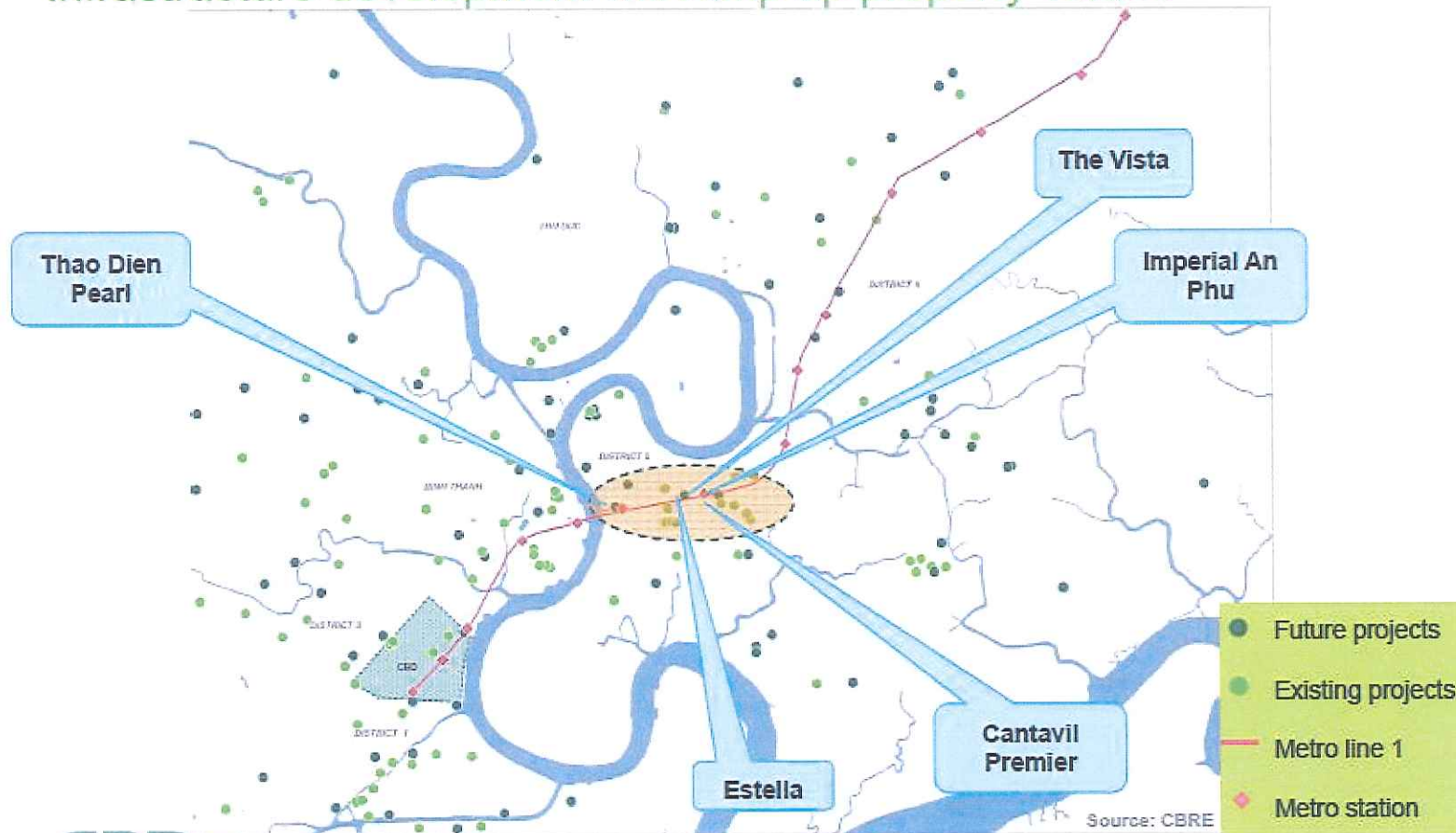
Metro Line No. 1 is making good progress

Thursday, June 20, 2013



A BUYER'S GUIDE - LOCATION

Infrastructure development will ramp up property values



A BUYER'S GUIDE - PRICE

Projects with improved payment schedules & reduced interest rates

Tropic Garden – District 2

- 388 units
- Current asking price: \$1,100-\$1,300/sm
- *Good payment terms: hand-over when 50% paid, the rest payable with 0% interest rate in 3 years*

Xi Riverview Palace – District 2

- 258 units
- Current asking price: \$2,200-\$2,500/sm
- *High discount: 18% if 98% payable*

The Estella – District 2

- 719 units
- Current asking price: \$1,600-\$1,800/sm
- *Good payment terms: hand-over when 50% paid, the rest payable with 0% interest rate in 2 years*

SGC Nguyen Cuu Van – Binh Thanh

- 104 units
- Current asking price: \$1,000-\$1,100/sm
- *Good price and payment terms: 50% hand-over, the rest payable in 1 year with 0%*

Him Lam Riverside – District 7

- 314 units
- Current asking price: \$1,357 - \$1,457/sm
- *Good payment terms: 50% hand-over, the rest payable in 2 years with 0%*

Happy Valley – District 7

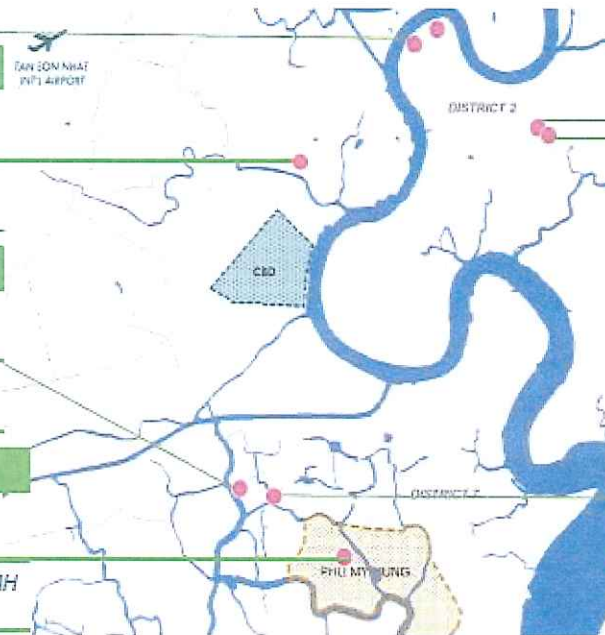
- 541 units
- Current asking price: \$1,500 - \$1,700 /sm
- *Longest payment schedule (30 months) in PMH*
- Free parking

Imperia An Phu – District 2

- 700 units
- Current asking price: \$1,500-\$1,800/sm
- *Excellent payment terms: hand-over when 10%-30% paid, the rest payable with 0% interest rate*
- Free parking
- Furniture package
- Gym free for 1 year

Sunrise City (North) – District 7

- 554 units
- Current asking price: \$1,119 - \$1,428/sm
- *Smaller unit size, lower price than P1,*
- *Good payment terms (54 months) – Central towers*



Source: CBRE



THAO DIEN PEARL

\$1,500 - \$1,900 / sqm





CANTAVIL AN PHU

\$1,500 - \$2,000 / sqm





THE IMPERIA

\$1,500 - \$1,800 / sqm





THE VISTA

\$1,300 - \$1,800 / sqm





HOANG ANH RIVER VIEW

\$800 - \$1,200 / sqm





AN CU APARTMENT





AN KHANG APARTMENT

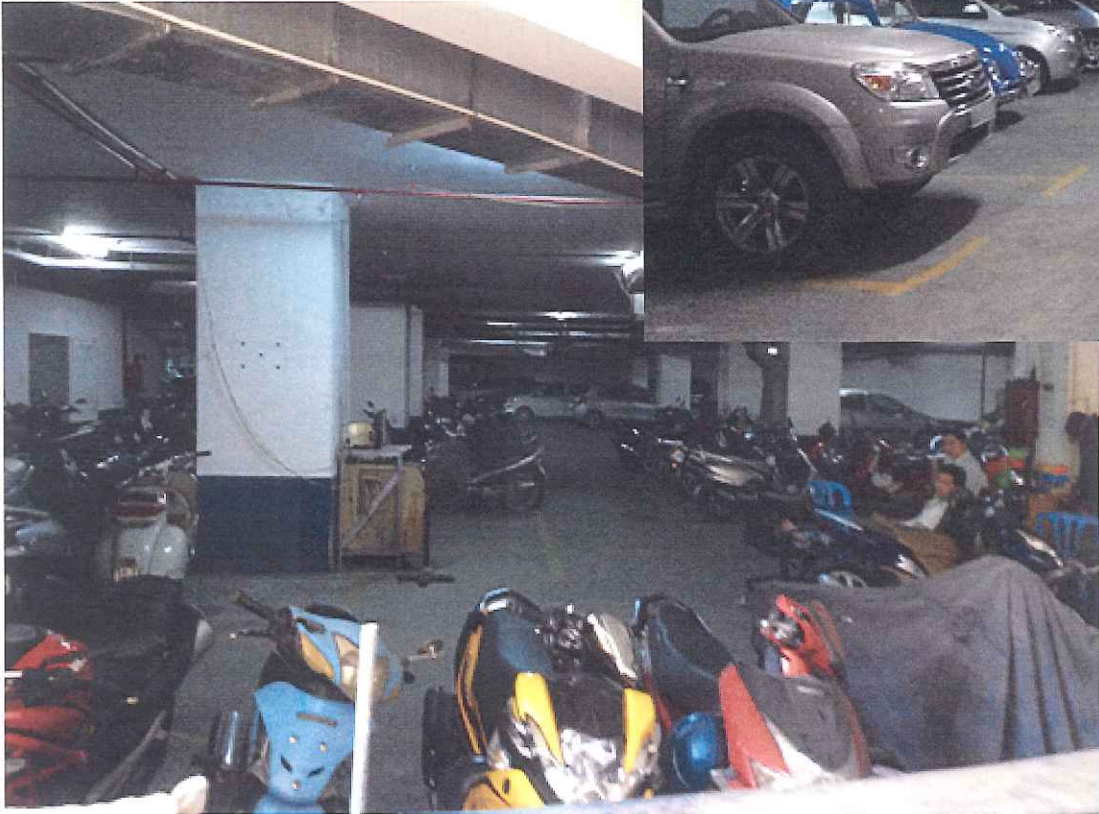
\$900 - \$1,000/ sqm



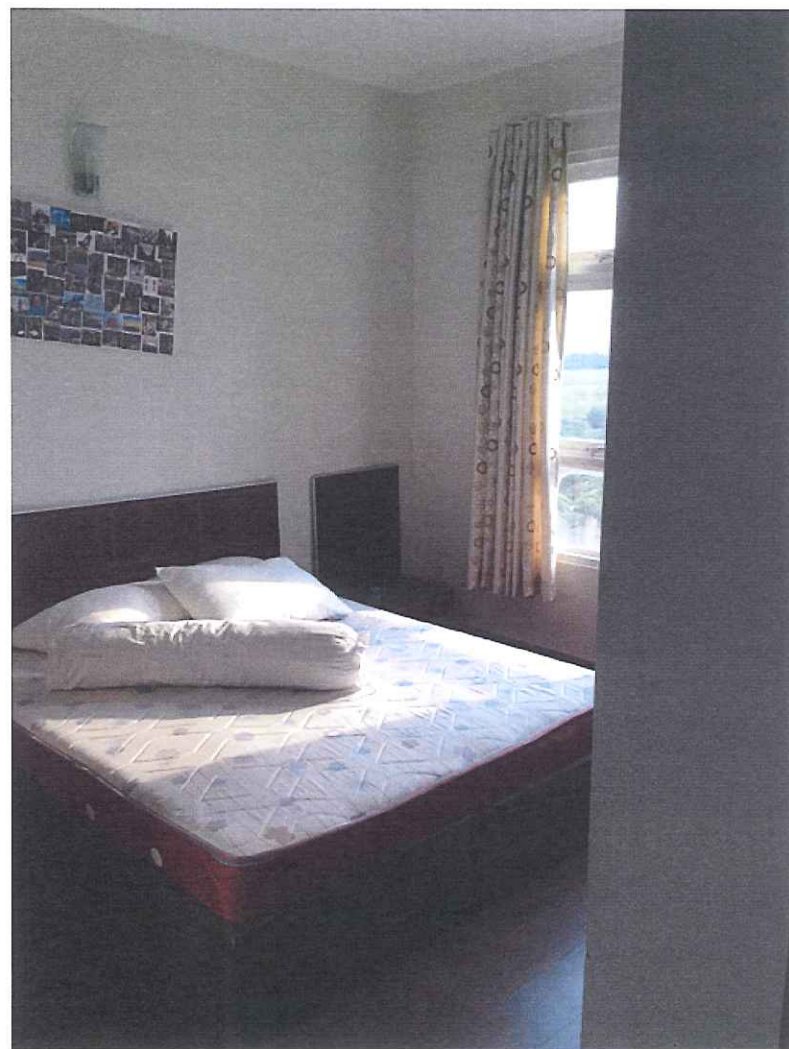
内観、外観、駐車場入口写真



駐車場内部



内観1



内観2



内観3



周辺にあるインターナショナルスクール

BRITISH INTERNATIONAL SCHOOL

AUSTRALIAN INTERNATIONAL SCHOOL

THE MONTESSORI INTERNATIONAL SCHOOL

INTERNATIONAL SCHOOL OF HCMC

ホーチミン2区開発状況





