

ベトナム ホーチミン市2区

コンドミニアム情報





# BUILDING PROJECT

Luong Dinh Cua Street, Binh An Ward, District 2, HCMC



# MASTERS' BUILDING PROJECT

## PROJECT LOCATION

タンソンニャット国際空港まで11km  
現市街地まで3km



**LOCATION OF THE BUILDING**  
Binh An Ward, District 2, HCMC

Google earth

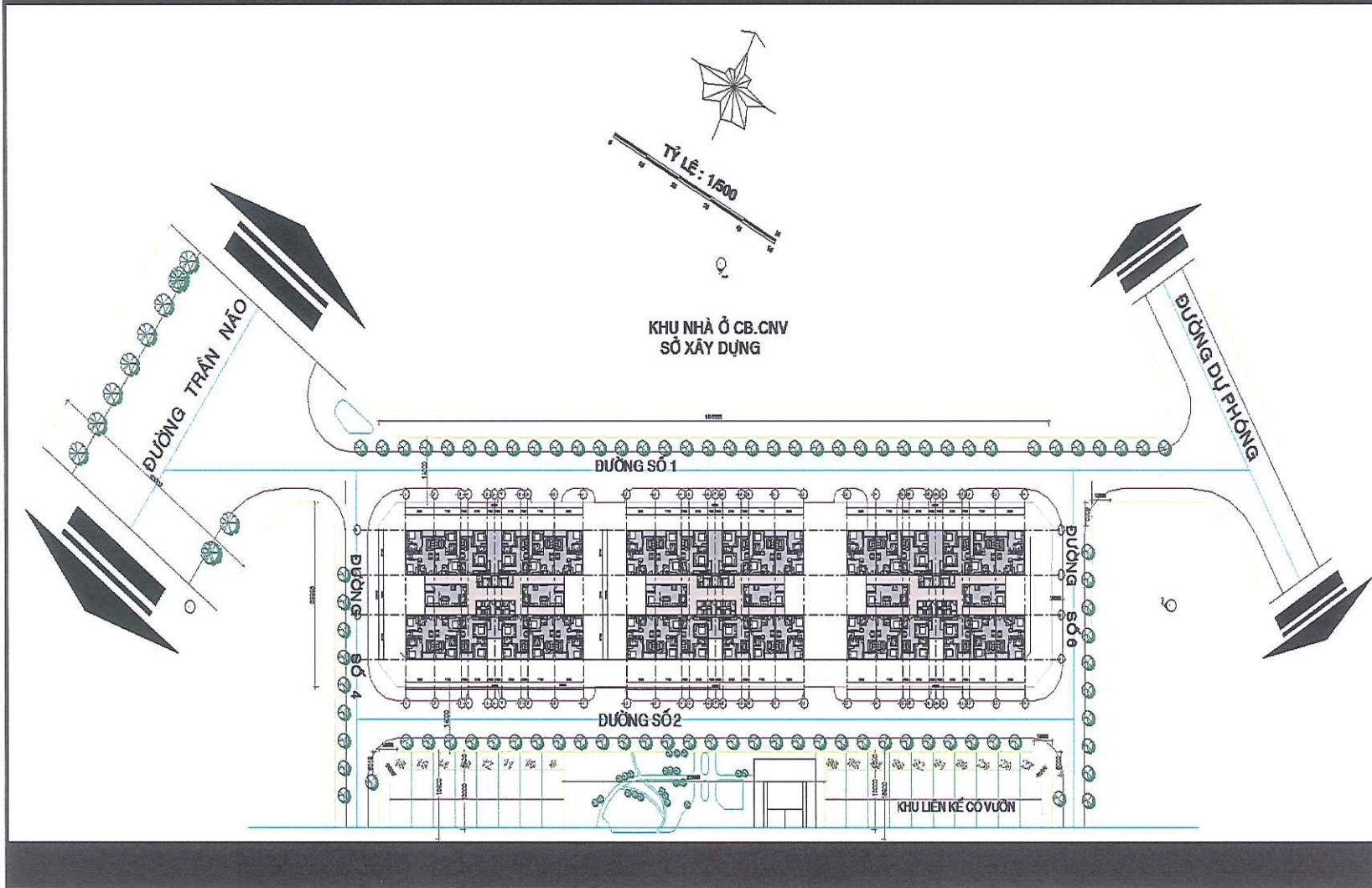
# MASTERS' BUILDING PROJECT

## PROJECT LOCATION



# MASTERS' BUILDING PROJECT

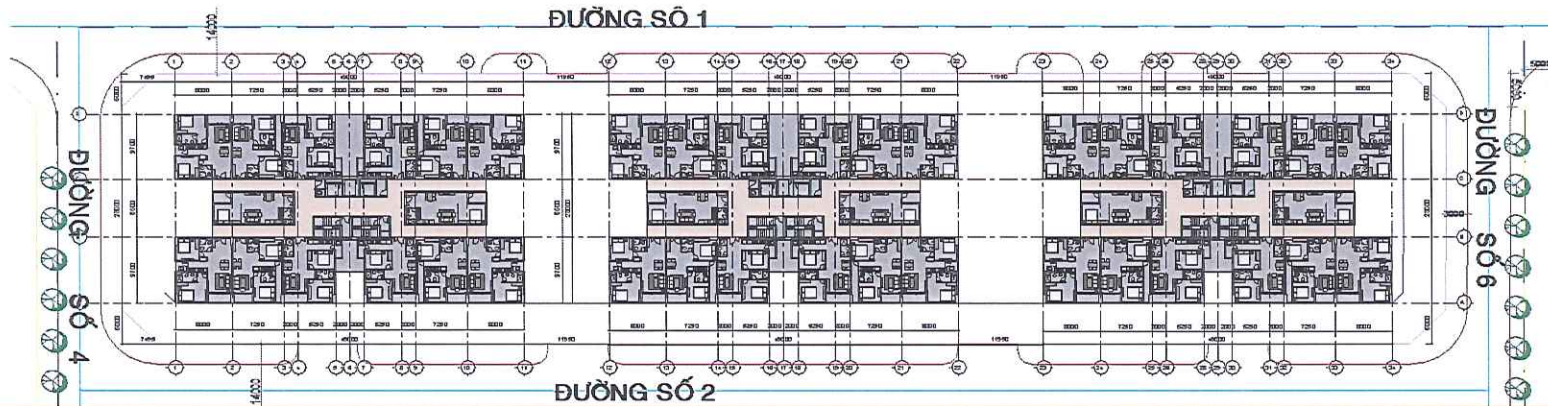
TYPICAL FLOOR UNIT: SMALL



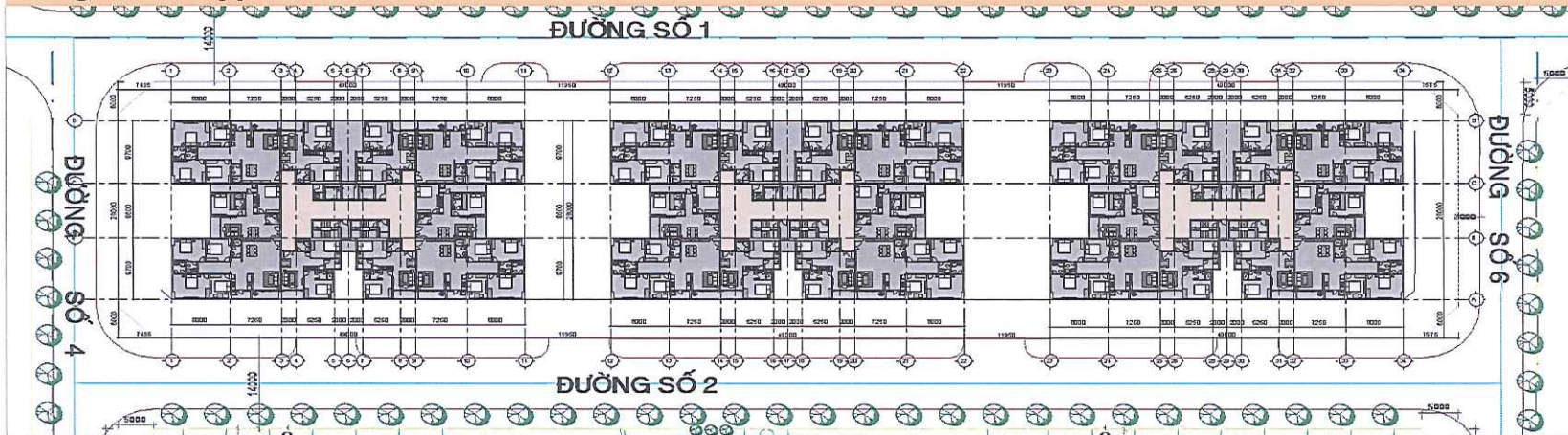
# MASTERS' BUILDING PROJECT

## TYPICAL FLOOR PLAN

### Small Unit Typical Floor Plans

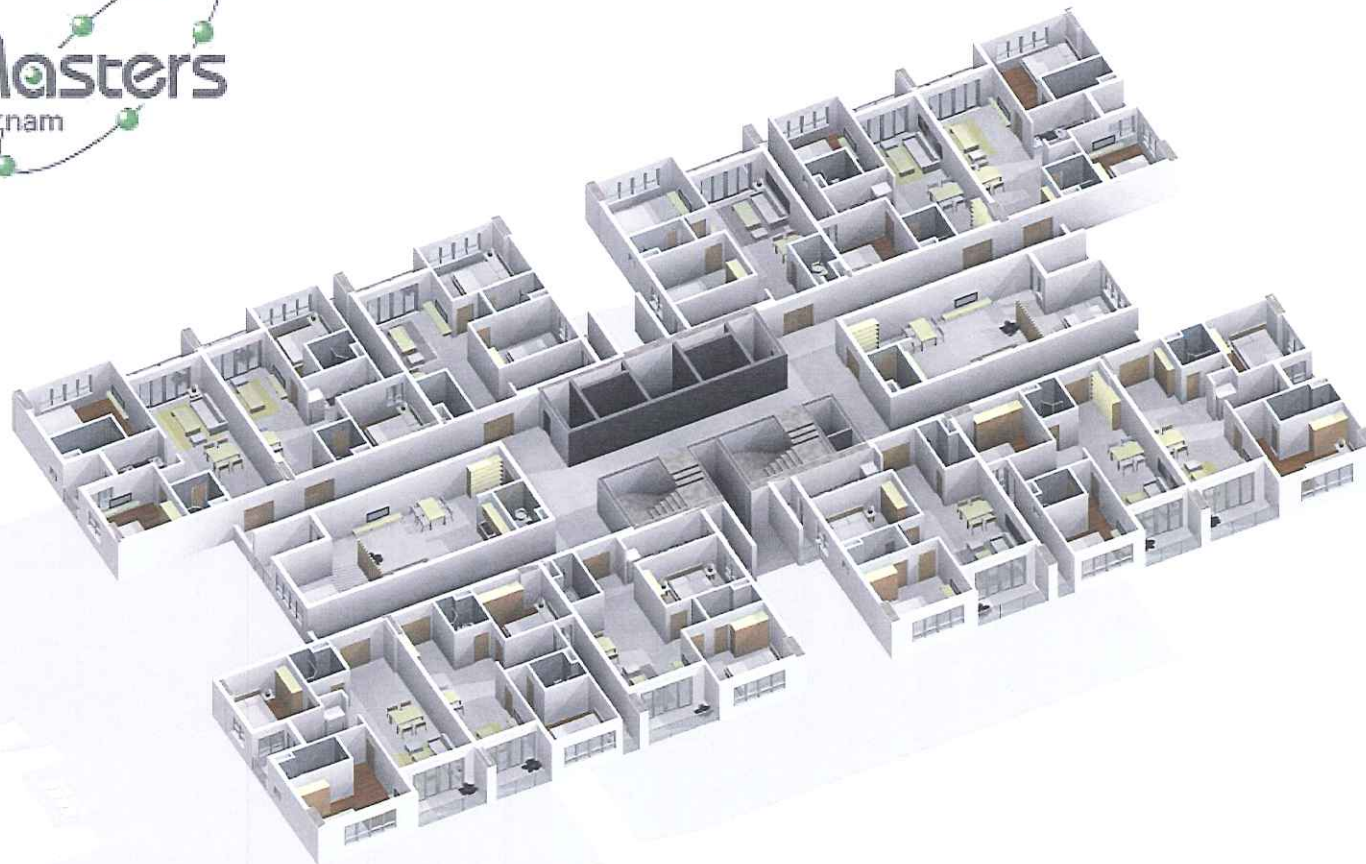


### Large Unit Typical Floor Plans



# MASTERS' BUILDING PROJECT

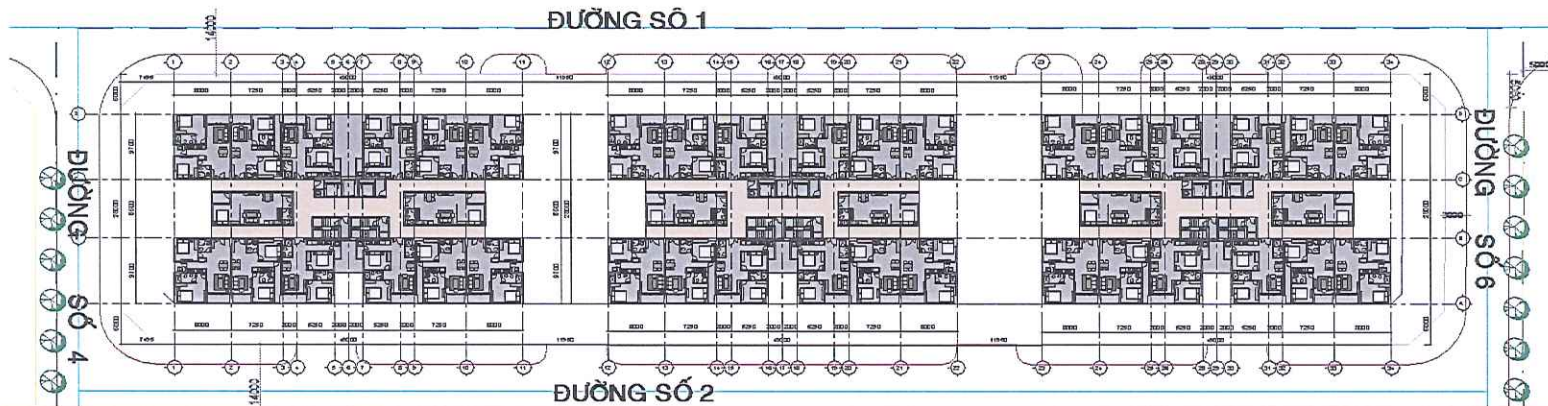
PERSPECTIVE VIEW: SMALL



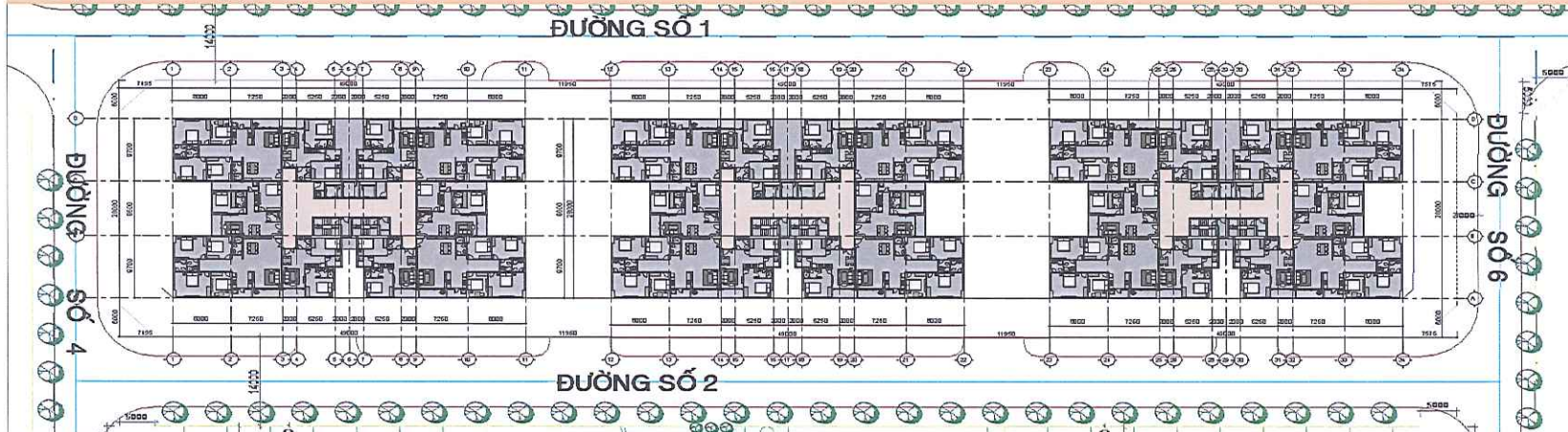
# MASTERS' BUILDING PROJECT

# TYPICAL FLOOR PLAN

## Small Unit Typical Floor Plans



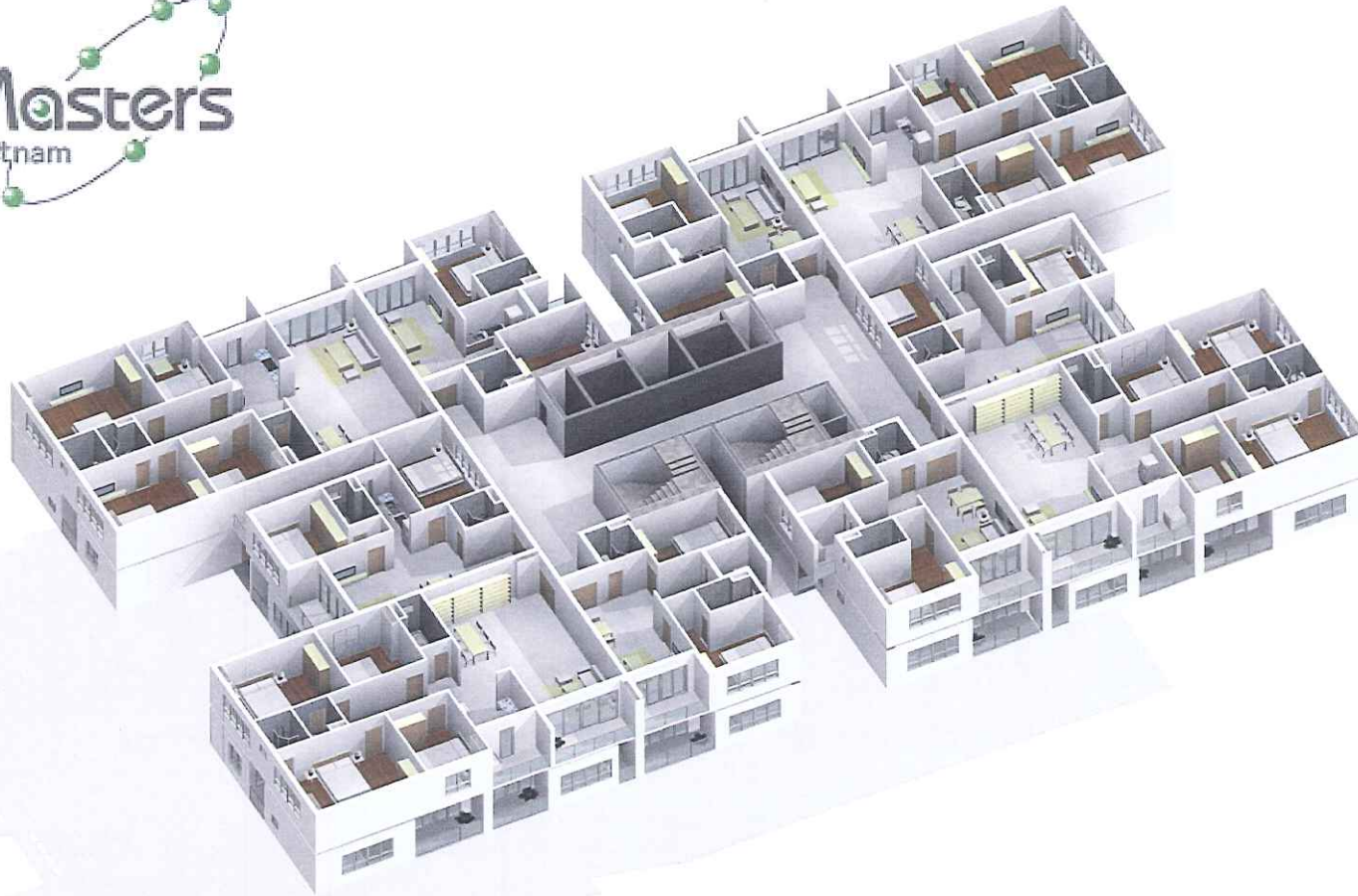
## Large Unit Typical Floor Plans





# MASTERS' BUILDING PROJECT

PERSPECTIVE VIEW: LARGE





# APARTMENT UNITS

---

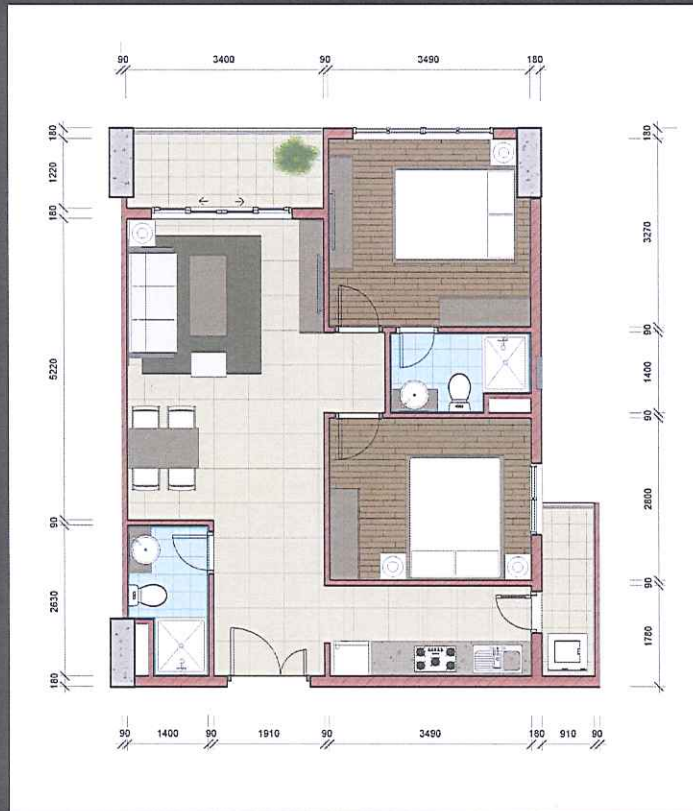
**Type A:** Approx. 50 m<sup>2</sup> / unit  
**Type A1:** 51,28/57,25 m<sup>2</sup> / unit

1 BEDROOM



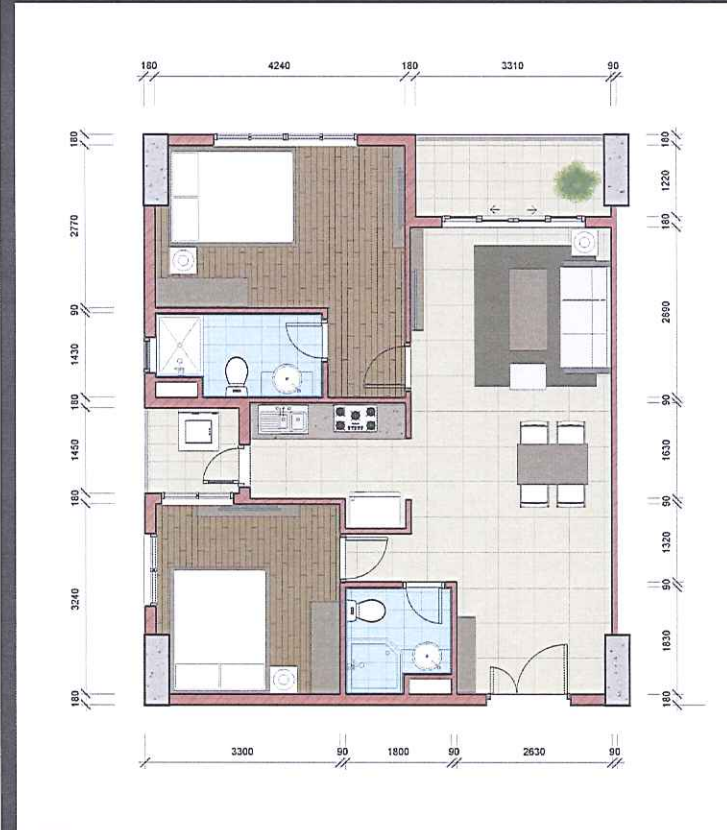
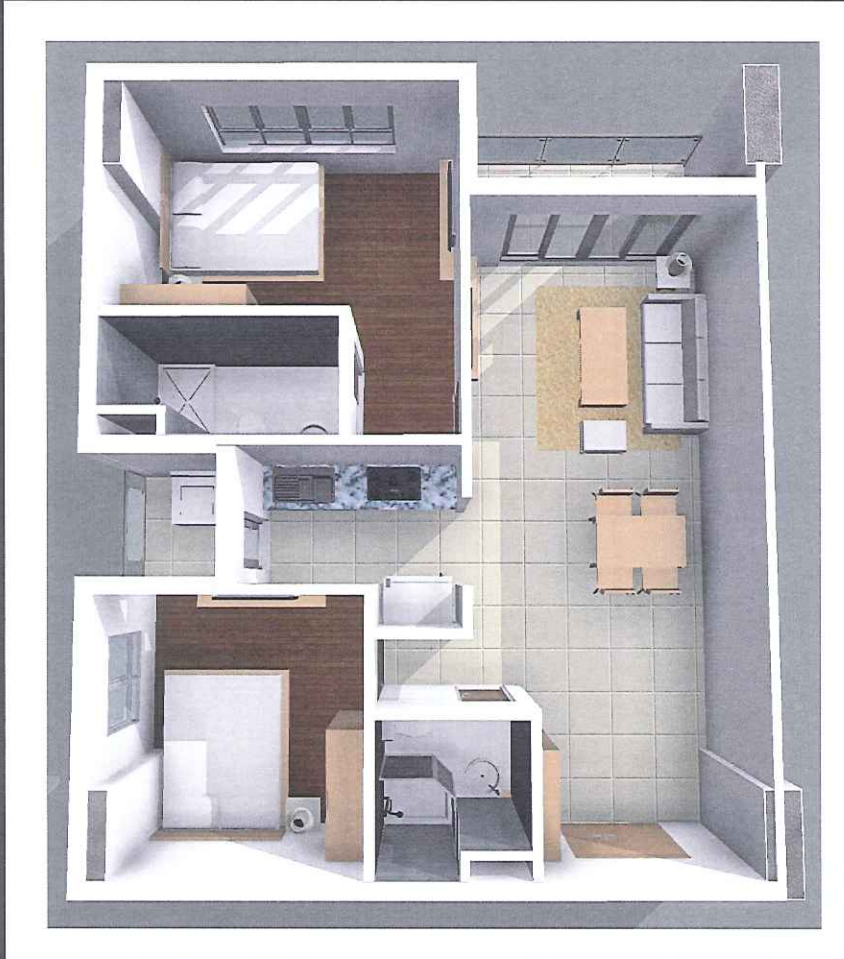
**Type B:** 60-70 m<sup>2</sup> / unit  
**Type B1:** 70.90/77.60 m<sup>2</sup> / unit

2 BEDROOMS



**Type B:** 60-70 m<sup>2</sup> / unit  
**Type B2:** 67,69/74,55 m<sup>2</sup> / unit

2 BEDROOMS



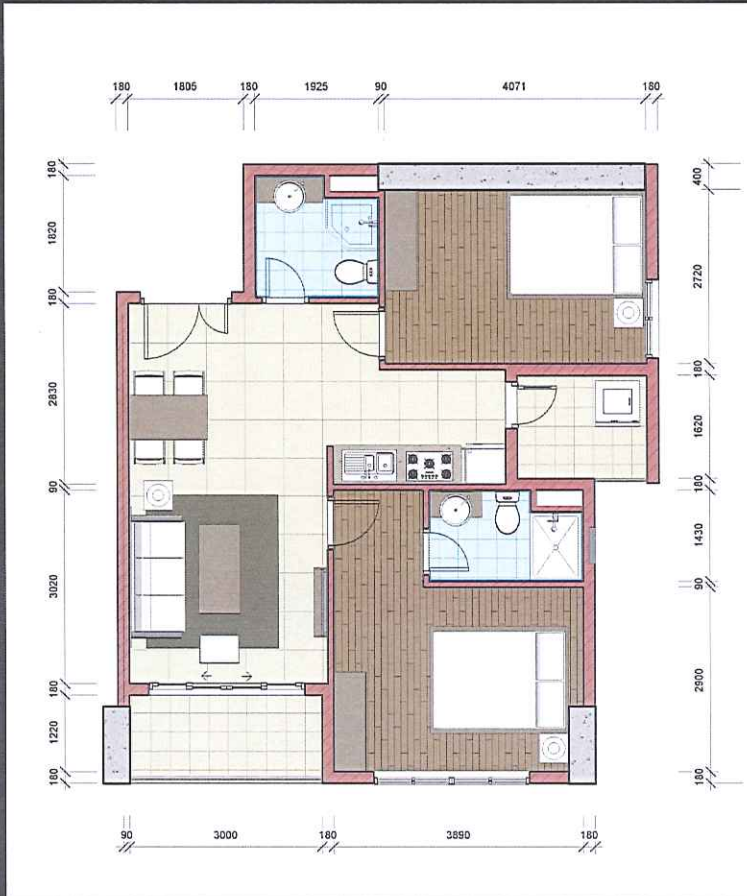
**Type B:** 60-70 m<sup>2</sup> / unit  
**Type B3:** 66,22 / 68,38 m<sup>2</sup> / unit

2 BEDROOMS



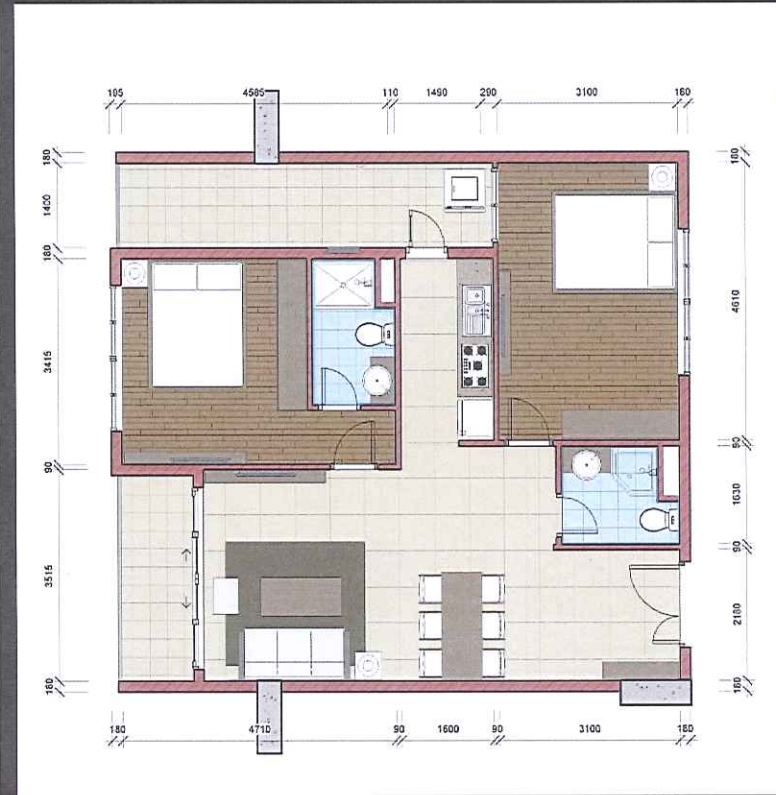
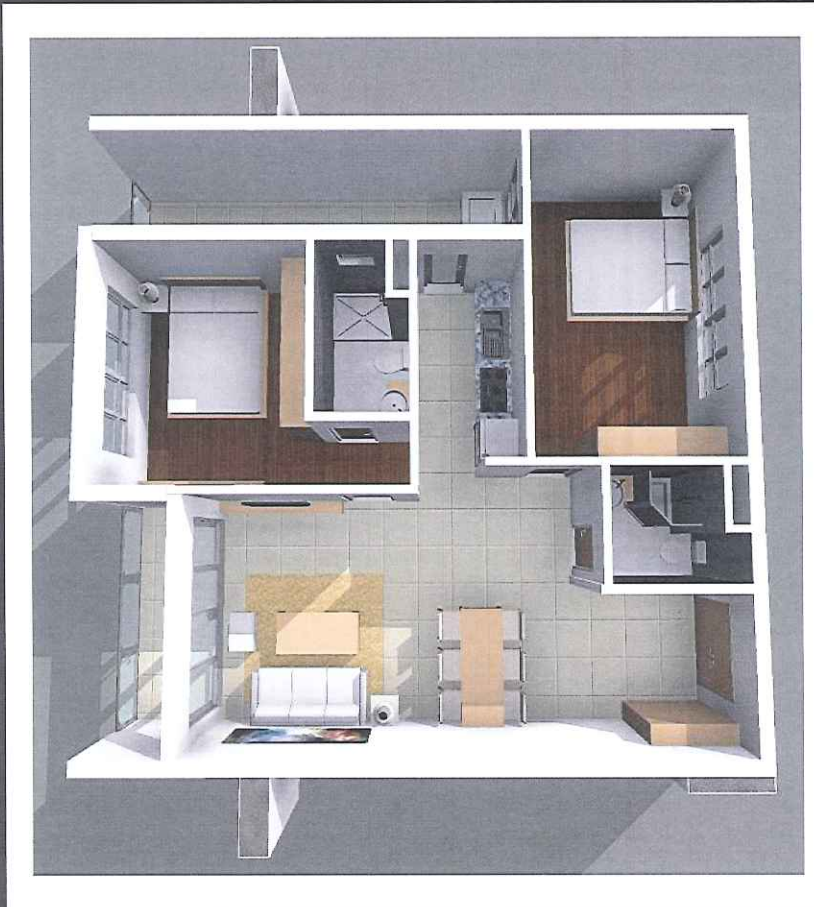
**Type B:** 60-70 m<sup>2</sup> / unit  
**Type B4:** 64.94 / 72,40 / unit

2 BEDROOMS



**Type C:** 70-80 m<sup>2</sup> / unit  
**Type C1:** 81.86 / 88.25 m<sup>2</sup> / unit

2 BEDROOMS





**Type D:** 90m<sup>2</sup> + / unit

**Type D1:** 136.83/146.36 m<sup>2</sup> / unit

3 BEDROOMS



建設会社COSACOの他物件建設現場



駐車場



屋上

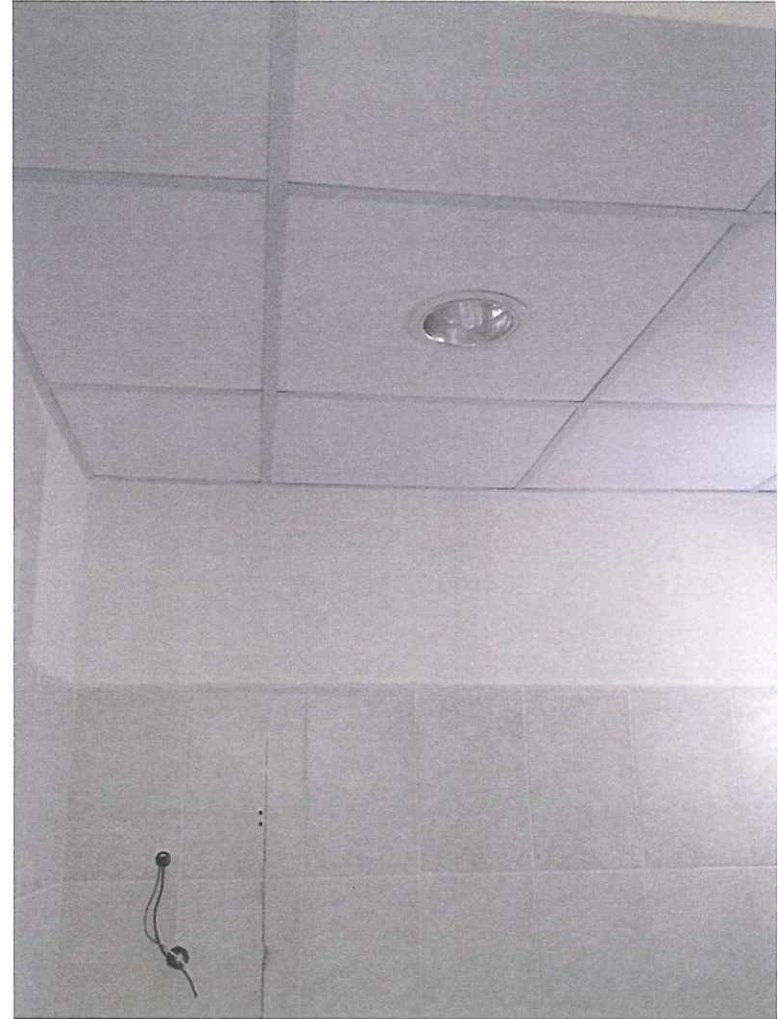


屋上



内装

内装



# 内装





設計会社Raymondのベトナム内他物件建設現場

